

# GRANDVIEW POLICE DEPARTMENT

207 W. 2ND STREET, GRANDVIEW, WA 98930 TELEPHONE (509) 882-2000  
FAX (509) 882-1232



KAL FULLER  
Chief of Police

**Date:** 10/14/15  
**To:** Anita Palacios, City Clerk  
**From:** Kal Fuller, Chief of Police  
**Re:** Yakima Valley Natural Hazzard Mitigation Plan Update 2015

Attached you will find information to be included in the October 27, 2015 City Council agenda packets. This information covers our 2015 efforts to update the Yakima Valley Natural Hazzard Mitigation Plan, in relation to the City of Grandview. If this information can be included in the October 27<sup>th</sup> Council meeting packet, there will be time to review it and then the Plan can be presented for approval at the November 9, 2015 special Council meeting.

Adoption of this plan is necessary to qualify the County as well as the Emergency Management Council jurisdictions of Grandview, Granger, Harrah, Mabton, Moxee, Naches, Selah, Sunnyside, Tieton, Toppenish, Union Gap, Wapato, and Zillah for Federal/ State hazard mitigation funding. The previous version of the plan was adopted by only Yakima County .The plan has been updated to reflect progress on mitigation measures made since the original version of the plan and to address additional flood hazard areas that include the jurisdictions within Yakima County. This plan update will be approved by FEMA pending adoption of the jurisdictions covered. This plan is updated every five years. This plan is not a regulatory plan, but one that makes the community eligible for federal funds after certain disasters.

Included in the packet is some information from the Yakima Valley Office of Emergency Management's website (<http://yvoem-nhmplan.blogspot.com/>). By navigating the pages on that site, any council member or citizen will be able to participate in a virtual town hall meeting on the project as well as view the plans for all the participating jurisdictions.

Anyone may contact Yakima Valley Office of Emergency Management if they have any questions or concerns regarding the plan ([oem@co.yakima.wa.us](mailto:oem@co.yakima.wa.us)).

Respectfully,

A handwritten signature in black ink that reads "Kal Fuller".

Kal Fuller  
Chief of Police

CC: Cus Arteaga, City Administrator

34



G+1 0

More Next Blog»

Create Blog Sign In

# Yakima Valley NHMP Update-Virtual Town Hall Meeting

## City of Grandview NHMP Update2015-20

Click on the link to view a draft of the City of Grandview's Natural Hazard Mitigation Plan Update for 2015-2020:

<https://drive.google.com/file/d/0Bwdp1IJRMnaDd1N1MGZleVhMXzQ/view?usp=sharing>



G+1 Recommend this on Google

[Home](#)

Subscribe to: [Posts \(Atom\)](#)

### About Me

#### 2015 Yakima Valley NHMP Plan Update- Virtual Town Hall Meeting

Providing robust disaster mitigation, response, recovery, and public outreach to our Member Jurisdictions: Grandview, Granger, Harrah, Mabton, Moxee,Naches, Selah, Sunnyside, Tieton,Toppenish, Union Gap, Wapato, Yakima County, and Zillah.

[View my complete profile](#)

2015 (C)YVOEM. Simple template. Powered by [Blogger](#).

### Blog Archive

▼ 2015 (1)

▼ September (1)

[Background and Purpose of the Natural Hazard Mitig...](#)

### PAGES

- [Home](#)
- [Natural Hazard Mitigation Plan Update Presentation...](#)
- [City of Grandview NHMP Update2015-20](#)
- [City of Granger NHMP Update2015-20](#)
- [City of Harrah NHMP Update 2015-20](#)
- [City of Mabton NHMP Update 2015-20](#)
- [City of Moxee NHMP Update 2015-20](#)
- [city of Naches NHMP Update 2015-20](#)
- [City of Tieton NHMP Update 2015-20](#)
- [City of Selah NHMP Update 2015-20](#)
- [City of Sunnyside NHMP Update2015-20](#)
- [City of Toppenish NHMP Update 2015-20](#)
- [City of Union Gap NHMP Update 2015-20](#)
- [City of Wapato NHMP Update 2015-20](#)
- [City of Zillah NHMP Update 2015-20](#)
- [Yakima County NHMP Update 2015-20](#)



More Next Blog»

Create Blog Sign In

# Yakima Valley NHMP Update-Virtual Town Hall Meeting

## Natural Hazard Mitigation Plan Update Presentation

Please Click on the following link to participate in the Natural Hazard Mitigation Plan Update Presentation: [https://docs.google.com/presentation/d/1xbbgGp2oozYzElH603AeGx6eSQiH18RCyle\\_N0Ez9Y/edit?usp=sharing](https://docs.google.com/presentation/d/1xbbgGp2oozYzElH603AeGx6eSQiH18RCyle_N0Ez9Y/edit?usp=sharing) [https://docs.google.com/presentation/d/1xbbgGp2oozYzElH603AeGx6eSQiH18RCyle\\_N0Ez9Y/edit?usp=sharing](https://docs.google.com/presentation/d/1xbbgGp2oozYzElH603AeGx6eSQiH18RCyle_N0Ez9Y/edit?usp=sharing)

Recommend this on Google

[Home](#)

Subscribe to: [Posts \(Atom\)](#)

### PAGES

- [Home](#)
- [Natural Hazard Mitigation Plan Update Presentation...](#)
- [City of Grandview NHMP Update2015-20](#)
- [City of Granger NHMP Update2015-20](#)
- [City of Harrah NHMP Update 2015-20](#)
- [City of Mabton NHMP Update 2015-20](#)
- [City of Moxee NHMP Update 2015-20](#)
- [city of Naches NHMP Update 2015-20](#)
- [City of Tieton NHMP Update 2015-20](#)
- [City of Selah NHMP Update 2015-20](#)
- [City of Sunnyside NHMP Update2015-20](#)
- [City of Toppenish NHMP Update 2015-20](#)
- [City of Union Gap NHMP Update 2015-20](#)
- [City of Wapato NHMP Update 2015-20](#)
- [City of Zillah NHMP Update 2015-20](#)
- [Yakima County NHMP Update 2015-20](#)

### About Me

[2015 Yakima Valley NHMP Plan Update- Virtual Town Hall Meeting](#)

Providing robust disaster mitigation, response, recovery, and public outreach to our Member Jurisdictions: Grandview, Granger, Harrah, Mabton, Moxee,Naches, Selah, Sunnyside, Tieton,Toppenish, Union Gap, Wapato, Yakima County, and Zillah.

[View my complete profile](#)

2015 (C)YVOEM. Simple template. Powered by [Blogger](#).

### Blog Archive

▼ [2015 \(1\)](#)

▼ [September \(1\)](#)

[Background and Purpose of the Natural Hazard Mitig...](#)

36

# Yakima Valley NHMP Update-Virtual Town Hall Meeting

Tuesday, September 22, 2015

## Background and Purpose of the Natural Hazard Mitigation Plan Update 2015

Greetings from Yakima Valley Office of Emergency Management! This site provides an online tool to provide 24/7 education on the background and purpose of the Natural Hazard Mitigation Plan (NHMP) Update 2015. Site includes copies of the County, all participating jurisdictions annexes, as well as a PowerPoint presentation on what the NHMP is.

Adoption of this plan is necessary to qualify the County as well as the Emergency Management Council jurisdictions of Grandview, Granger, Harrah, Mabton, Moxee, Naches, Selah, Sunnyside, Tieton, Toppenish, Union Gap, Wapato, and Zillah for Federal/ State hazard mitigation funding. The previous version of the plan was adopted by only Yakima County. The plan has been updated to reflect progress on mitigation measures made since the original version of the plan and to address additional flood hazard areas that include the jurisdictions within Yakima County. This plan update will be approved by FEMA pending adoption of the jurisdictions covered. This plan is updated every five years. This plan is not a regulatory plan, but one that makes the community eligible for federal funds after certain disasters. The focus of this plan is natural hazards that are unique to our area.

Please contact Yakima Valley Office of Emergency Management if you have any questions or concerns regarding the resolution or plan at [oem@co.yakima.wa.us](mailto:oem@co.yakima.wa.us). By navigating the pages on this site you will be able to participate in a virtual town hall meeting on the project as well as view the plans for all the participating jurisdictions. Please be advised that the Yakama Nation and City of Yakima have their own stand alone emergency management office and are not a part of the Valley's Emergency Management Council.



 Recommend this on Google

[Home](#)

Subscribe to: [Posts \(Atom\)](#)

### PAGES

- [Home](#)
- [Natural Hazard Mitigation Plan Update Presentation...](#)
- [City of Grandview NHMP Update2015-20](#)
- [City of Granger NHMP Update2015-20](#)
- [City of Harrah NHMP Update 2015-20](#)
- [City of Mabton NHMP Update 2015-20](#)
- [City of Moxee NHMP Update 2015-20](#)
- [city of Naches NHMP Update 2015-20](#)
- [City of Tieton NHMP Update 2015-20](#)
- [City of Selah NHMP Update 2015-20](#)
- [City of Sunnyside NHMP Update2015-20](#)
- [City of Toppenish NHMP Update 2015-20](#)
- [City of Union Gap NHMP Update 2015-20](#)
- [City of Wapato NHMP Update 2015-20](#)
- [City of Zillah NHMP Update 2015-20](#)
- [Yakima County NHMP Update 2015-20](#)



# 2015 Natural Hazard Mitigation Plan Update-

## *Hall Virtual Town*

### An Overview

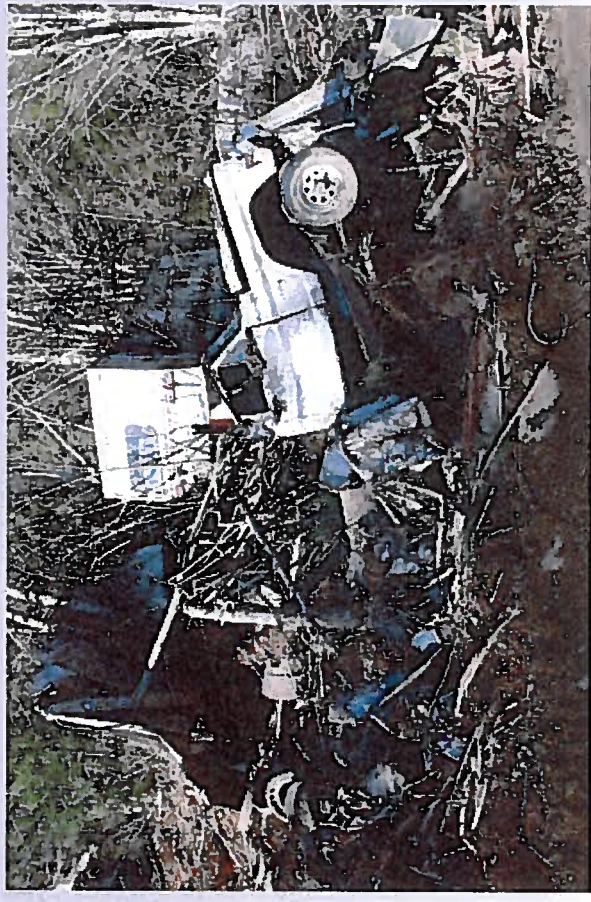




# What is Hazard Mitigation?

---

- Action taken to reduce or eliminate long-term risk
- Long term impact
- Different from
  - Preparedness
  - Response
  - Short-term recovery





# Who is Involved?

---

- Yakima County
- Municipalities: *Grandview, Granger, Harrah, Mabton, Moxee, Naches, Selah, Sunnyside, Tieton, Toppenish, Union Gap, Wapato, and Zillah.*



# Why do it?

- Participation in the process makes us eligible for Federal funding after flood events.





# What is a Hazard Mitigation Plan?

---

- Identifies natural hazards
- Identifies impacted locations
- Proposes goals to reduce vulnerabilities





# Natural Hazards

---

- Earthquakes
- Flooding
- Landslide
- Volcanoes
- Wildland Fire
- Winter Storms





# Impacted Locations

---

- Each community
- Each hazard
- Identified by map
- Estimate impact





# Goals to Reduce Vulnerabilities

---

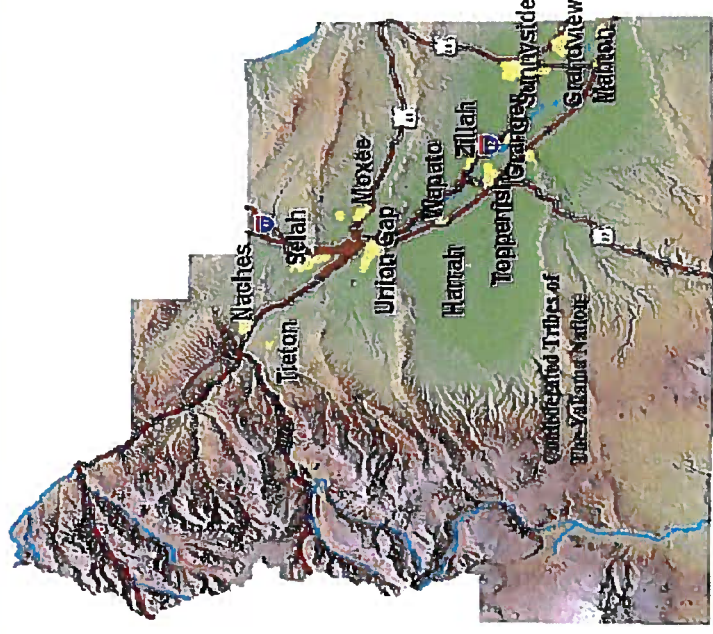
- Identify options
  - Prioritize goals
  - Find a Copy of the Plan:
- Go to [www.  
http://yvoem-nhmplan.  
blogspot.com/](http://yvoem-nhmplan.blogspot.com/)







# 2015 Yakima Valley Hazard Mitigation Plan Update- Virtual Town Hall



## EXECUTIVE SUMMARY

### Authority

Section 322 of the Robert T. Stafford Disaster Relief and Emergency Assistance Act (Stafford Act), 42 U.S.C. 5165, as amended by the Disaster Mitigation Act of 2000 (DMA) (P.L. 106-390), provides for States, Tribes, and local governments to undertake a risk-based approach to reducing risks to natural hazards through mitigation planning. The National Flood Insurance Act of 1968, as amended, 42 U.S.C. 4001 *et seq*, reinforced the need and requirement for mitigation plans, linking flood mitigation assistance programs to State, Tribal and Local Mitigation Plans.

After a presidential major disaster declaration, mitigation funding becomes available. The amount is based on a percentage of the total federal grants awarded under the Public Assistance and Individuals and Households Programs for the entire disaster. Projects are funded with a combination of federal, state, and local funds. Information on this program and application process is disseminated at public briefings and by other means.

Section 322 of the amended Stafford Act essentially states that as a condition of receiving a disaster loan or grant: "The state and local government(s) shall agree that natural hazards in the areas affected shall be evaluated and appropriate action taken to mitigate such hazards, including safe land-use and construction practices. For disasters declared after November 1, 2004, all potential applicants (sub-grantees) must have either their own, or be included in a regional, locally adopted and FEMA approved all hazard mitigation plan in order to be eligible to apply for mitigation grant funds."

The regulations governing the mitigation planning requirements for local mitigation plans are published under 44 CFR §201.6. Under 44 CFR §201.6, local governments must have a FEMA-approved Local Mitigation Plan in order to apply for and/or receive project grants under the following hazard mitigation assistance programs:

- Hazard Mitigation Grant Program (HMGP)

The Hazard Mitigation Grant Program (HMGP) provides funds to States, Territories, Indian Tribal governments, local governments, and eligible private non-profits (PNPs) following a Presidential major disaster declaration.

- Pre-Disaster Mitigation (PDM)

- Flood Mitigation Assistance (FMA)

The Pre-Disaster Mitigation (PDM) Program and Flood Mitigation Assistance (FMA) programs provide funds annually to States, Territories, Indian Tribal governments, and local governments. Although the statutory origins of the programs differ, both share the common goal of reducing the risk of loss of life and property due to natural hazards.

### RATIONALE

The *Yakima County Multi-Jurisdictional Hazard Mitigation Plan* includes resources and information to assist county residents, public and private sector organizations, and others interested in participating in planning for natural and technological hazards. The mitigation plan provides a list of activities that may assist Yakima County in reducing risk and preventing loss from future hazard events. The action items address multi-hazard issues, as well as activities for flood, landslide, severe winter storm, windstorm, wildfire, earthquake, volcanic eruption and hazardous materials. Yakima County referenced the *2013 Washington State Enhanced State Hazard Mitigation Plan* for state-wide hazards.



## City of Grandview Hazard Mitigation Plan 2015

The City of Grandview has developed this specific annex to the *Yakima County Multi-Jurisdictional Hazard Mitigation Plan*. The City will adopt the county-wide HMP as both a reference and information guide.

For purposes of the City of Grandview HMP, these are identified threats and hazards:

Drought  
Earthquakes (6.5 or greater)  
Extreme Temperatures  
Hazardous Materials-Fixed or Transportation  
Lightning  
Severe Wind Storm  
Severe Winter Storms  
Volcanic Eruption



### What is the Plan Mission?

The mission of the City of Grandview Hazard Mitigation Plan is to promote sound public policy designed to protect citizens, critical facilities, infrastructure, private property, and the environment from natural and technological hazards. This can be achieved by increasing public awareness, documenting the resources for risk reduction and loss-prevention, and identifying activities to guide the city towards building a safer, more sustainable community.

### What are the Plan Goals?

The plan goals describe the overall direction that the Grandview government, organizations and citizens can take to work toward mitigating risk from natural and technological hazards.

The goals represent stepping-stones between the broad direction of the mission statement and the specific recommendations outlined in the action items.

#### 1. Protect Life, Property and Public Welfare

- Implement activities that assist in protecting lives by making homes, businesses, infrastructure, critical facilities, and other property more resistant to losses from natural and technological hazards.
- Reduce losses and repetitive damages for chronic hazard events while promoting insurance coverage for catastrophic hazards. Improve hazard assessment information to make recommendations for discouraging new development and encouraging preventive measures for existing development in areas vulnerable to natural and technological hazards.

#### 2. Public Awareness

Develop and implement education and outreach programs to increase public awareness of the risks associated with natural and technological hazards.

- Provide information on tools, partnership opportunities, and funding resources to assist in implementing mitigation activities.

**3. Natural Systems**

- Encourage development of acquisition and management strategies to preserve open space.

**4. Partnerships and Implementation**

- Strengthen communication and coordinate participation among and within public agencies, citizens, non-profit organizations, business, and industry to gain a vested interest in implementation.
- Encourage leadership within public and private sector organizations to prioritize and implement local, county, and regional hazard mitigation activities.

**5. Emergency Services**

- Establish policy to ensure mitigation projects for critical facilities, services, and infrastructure.
- Strengthen emergency operations by increasing collaboration and coordination among public agencies, non-profit organizations, business, and industry.
- Coordinate and integrate natural and technological mitigation activities, where appropriate, with emergency operations plans and procedures.





Blank Intentionally.

**City of Grandview  
Hazard Mitigation Plan  
2015**

**Table of Contents**

- 1. Participants and Level of Participation**
- 2. Community Profile**
  - a. City of Grandview Profile**
  - b. Yakima County Population Density (Map)**
  - c. Yakima County Publicly Owned Land (Map)**
  - d. City of Grandview Transportation Infrastructure**
- 3. Risk Assessment Profile**
  - a. City of Grandview Risk Assessment (Chart)**
  - b. Hazard Maps**
    - \* Yakima County Urban Wildlands**
    - \* Geologic Hazards**
    - \* Cascade Range Volcanoes**
- 4. National Flood Insurance Program**
- 5. 2010-2014 Action Items/Status/Summary**
- 6. Hazard-Specific Action Items**
  - a. 2015-2020 Hazard-Specific Action Items**
  - b. 2015-2020 Hazard-Specific Action Items Annual Review and Progress**



Blank Intentionally.

## City of Grandview Hazard Mitigation Plan 2015

### 1. Participants and Level of Participation

Mitigation Plan Participants
Fire Chief, Police Chief, Public Works Director, Code Enforcement

Contributions
Yakima Valley Office of Emergency Management's Senior Program Analyst provided the Emergency Preparedness Director changes/updates to the 2015 Yakima County Multi-Jurisdictional Hazard Mitigation Plan as reviewed by the WaState Hazard Mitigation Strategist. The City's 2015 Hazard Mitigation Plan is consistent with this update.

Codes, Regulations, & Procedures	2015 Status
<u>International Building Codes</u> Chapter 16—Structural Design Roof Snow Load Wind Design Data Earthquake Design Data Flood Design Data Chapter 9—Fire Protection Systems	Continue until 6/1/16—new code version
<div style="border: 1px solid black; padding: 5px; display: inline-block;">             2012 International Codes              All current and adopted by State and City              6/1/13           </div>	
Critical Area Ordinance (CAO) and Shoreline Master Program (SMP)—amended 2009	same
Growth Management Act—current	same

Public Participation/Public Meetings	
Date	Meeting Summary
SEP. 22 ,2015	<a href="http://yvoem-nhmplan.blogspot.com/">http://yvoem-nhmplan.blogspot.com/</a> An online tool to provide 24/7 education on the background and purpose of the Natural Hazard Mitigation Plan Update 2015. Site includes copies of the County, all participating jurisdictions annexes, as well as a PowerPoint presentation on what the NHMP is, and gives the viewers the opportunity to share comments through a Google Apps link.

53



Blank Intentionally.

54

**2. Community Profile**

- a. City of Grandview Profile
- b. Yakima County Population Density (Map)
- c. Yakima County Publicly Owned Land (Map)
- d. City of Grandview Transportation Infrastructure



## Welcome to Grandview, Washington



Photos courtesy of  
Mike Carpenter  
Grandview, WA

56

## Community Profile Grandview, Washington



### **LOCATION**

Grandview is centrally located at the midpoint of the I-82 corridor between Yakima (40 miles) and the Tri-Cities (40 miles). It is equidistant (approximately 180 miles) from Seattle, Spokane, and Portland, OR.

### **POPULATION**

City of Grandview - 10,862  
Within 15 Miles - 60,178  
Within 30 Miles - 490,657

### **CITY GOVERNMENT**

207 W. Second Street  
Grandview, WA 98930  
Phone: (509) 882-9200 - [www.grandview.wa.us](http://www.grandview.wa.us)  
8:00 AM to 5:00 PM (doors open at 9:00 AM)  
Monday through Friday (closed legal holidays)

### **QUALITY OF LIFE**

Our city features seven city parks, one swimming pool, one golf course, and four public tennis courts. We have parades, festivals, wine touring and wine tasting, and an active recreation program. We're also home to the Yakima Valley Fair & Rodeo and the Great Grandview Grape Stomp. Skiing, boating, hunting, and fishing are within an hour's drive.

To learn about local events and activities, click [here](#)

### **MUSEUM**

Ray E. Powell Museum  
313 Division Street - Phone: (509) 882-9219  
Open By Appointment Only

### **LIBRARY**

Bleyhl Community Library  
311 Division Street - (509) 882-9217  
Hours: Monday - Wednesday 1:30-8:00  
Thursday - Saturday 1:30-5:30

### **TOP AREA EMPLOYERS**

JM Smuckers Company	Kenyon Zero Storage
R.E. Powell Distributing	Shonan, USA
Wal-Mart Distribution	Welch Foods

### **HEALTHCARE**

[Sunnyside Community Hospital](#) is within six miles with medical clinics, dentists, and physicians within city limits. Four additional hospitals are within 40 miles.

### **SCHOOLS**

[Grandview School District](#) has three elementary schools, one middle school, and one high school (see page four for a more detailed profile).

Grandview Adventist Junior Academy is Grandview's private preschool through grade 8. Childcare and Preschool information on page three

## Grandview Community Pages

### RELOCATION INFORMATION

**Phone Service:** CenturyLink Communications (800) 877-1125 or (877) 213-1053

**Electric Service:** Pacific Power 888-221-7070 or 509-839-0100; Benton REA  
509-786-2913 or 800-221-6987

**City Utilities:** City of Grandview (509) 882-9211

**Voter Registration:** Yakima County (800) 833-0569; online registration click [here](#)

**Vehicle Registration:** Yakima County (509) 574-1370; online information click [here](#)

**Rental Housing:** Click [here](#) to search local newspaper classified listings

[Link to Grandview Area Yellow Pages](#)

### OTHER KEY COMMUNITY LINKS

[City of Grandview](#)

[Grandview Herald](#)

[Grandview Chamber of Commerce](#)

[Daily Sun News](#)

[Grandview School District](#)

[Yakima Herald-Republic](#)

[Sunnyside Community Hospital](#)

[El Sol de Yakima](#)

[Local Churches](#)

[Port of Grandview](#)

[WorkSource Sunnyside](#)

### CHILDCARE AND PRESCHOOL OPTIONS

**Grandview Adventist Junior Academy**

Phone: (509) 883-3817

106 North Elm Street

**Grandview Alice Grant Learning Center**

- WSMC

Phone: (509) 882-2444

1005 Grandridge Road

**ABC Preschool & Daycare**

Phone: (509) 882-6526

620 Grandridge Road

**Elvira's Child Care**

Phone: (509) 882-2559

1007 Viall Road

**Teddy Bear Corner**

Phone: (509) 882-4070

50 Grey Rd



## GRANDVIEW SCHOOL DISTRICT PROFILE

913 West Second Street, Grandview 98930

Phone: 509.882.8500 Fax: 509.882.2029 Website: [www.gsd200.org](http://www.gsd200.org)

Business Hours 7:30 am - 4:30 pm

Superintendent: Kevin Chase | 509.882.8514 | [kchase@gsd200.org](mailto:kchase@gsd200.org)

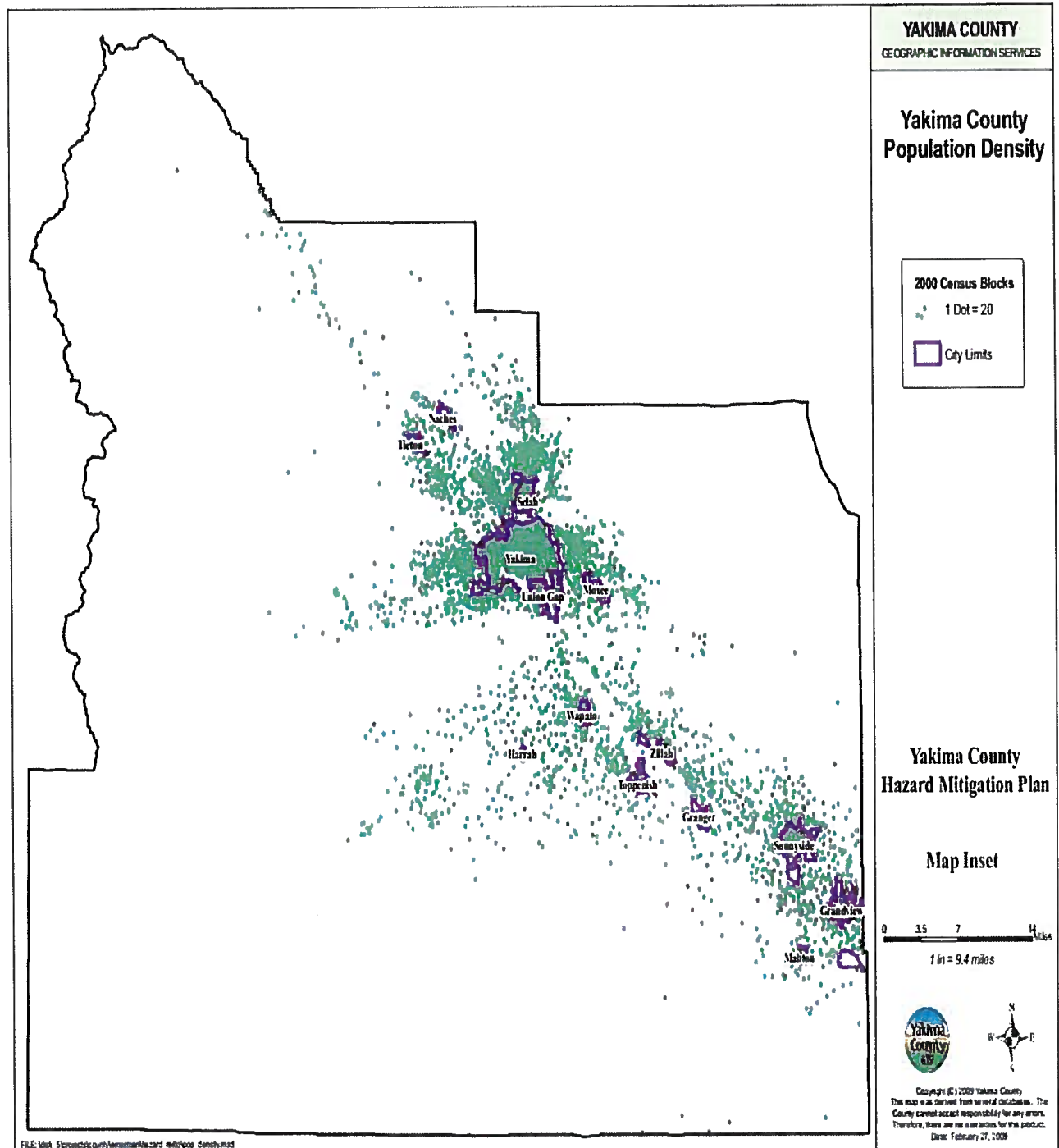
**OVERVIEW:** We believe that all students can graduate with the ability to be successful in college, work, and life. We will achieve this by continually improving instructional practices in every classroom, in every building in the District. In order to achieve this, we—the Grandview School District, are committed to focus on teaching and learning as a top priority. We will work collaboratively by sharing our classrooms on a regular basis for learning opportunities, giving and receiving feedback, coaching, and participating in quality professional adult learning communities so we develop our own skills as instructional leaders across the district.

**SPECIAL PROGRAMS OR INITIATIVES**—AP Classes, Gear-Up, Dual Language Instruction, Professional Learning Communities, 21st Century, AVID, BEST, and Literacy, ELL, and Mathematics Professional Development and Coaching.

ENROLLMENT		MSP/HSPE TEST SCORES 2011-2012				
May 2012 Student Count	3,538	Grade Level	Reading	Math	Writing	Science
<b>GENDER</b>		3rd Grade	53.5%	49.4%		
Male	50.5%					
Female	49.5%	4th Grade	57.3%	41.2%	40.1%	
<b>ETHNICITY</b>		5th Grade	46.4%	39.6%		28.8%
American Indian/Alaskan Native	0.2%	6th Grade	50.9%	44.8%		
Asian	0.2%	7th Grade	55.1%	57.1%	56.7%	
Pacific Islander	0.2%	8th Grade	59.7%	42.3%		35.1%
Asian/Pacific Islander	0.2%	10th Grade	70.2%	%*	83.1%	17.5%
Black	0.1%					
Hispanic	89.6%					
White	9.6%					
<b>TEACHER INFORMATION</b>		*Score reflects all End of Class (EOC) results in Year 2				
Classroom Teachers	195	<b>SAT SCORES</b>				
Average Years of Teacher Experience	10	Reading	436	Math	456	
Teachers w/ at least a Master's Degree	61.0%	Writing	430			
# Teachers in core academic classes	158	<b>GRADUATION RATES</b>				
Total number of core academic classes	1,030	On-Time Graduation Rate (2011)				66.1%
% of classes taught by teachers meeting ESEA highly qualified (HQ) definition	97.7%	Extended Graduation Rate (2011)				77.1%
District Revenue Per Student	\$9,538	Annual Dropout Rate (2009-10)				7.8%

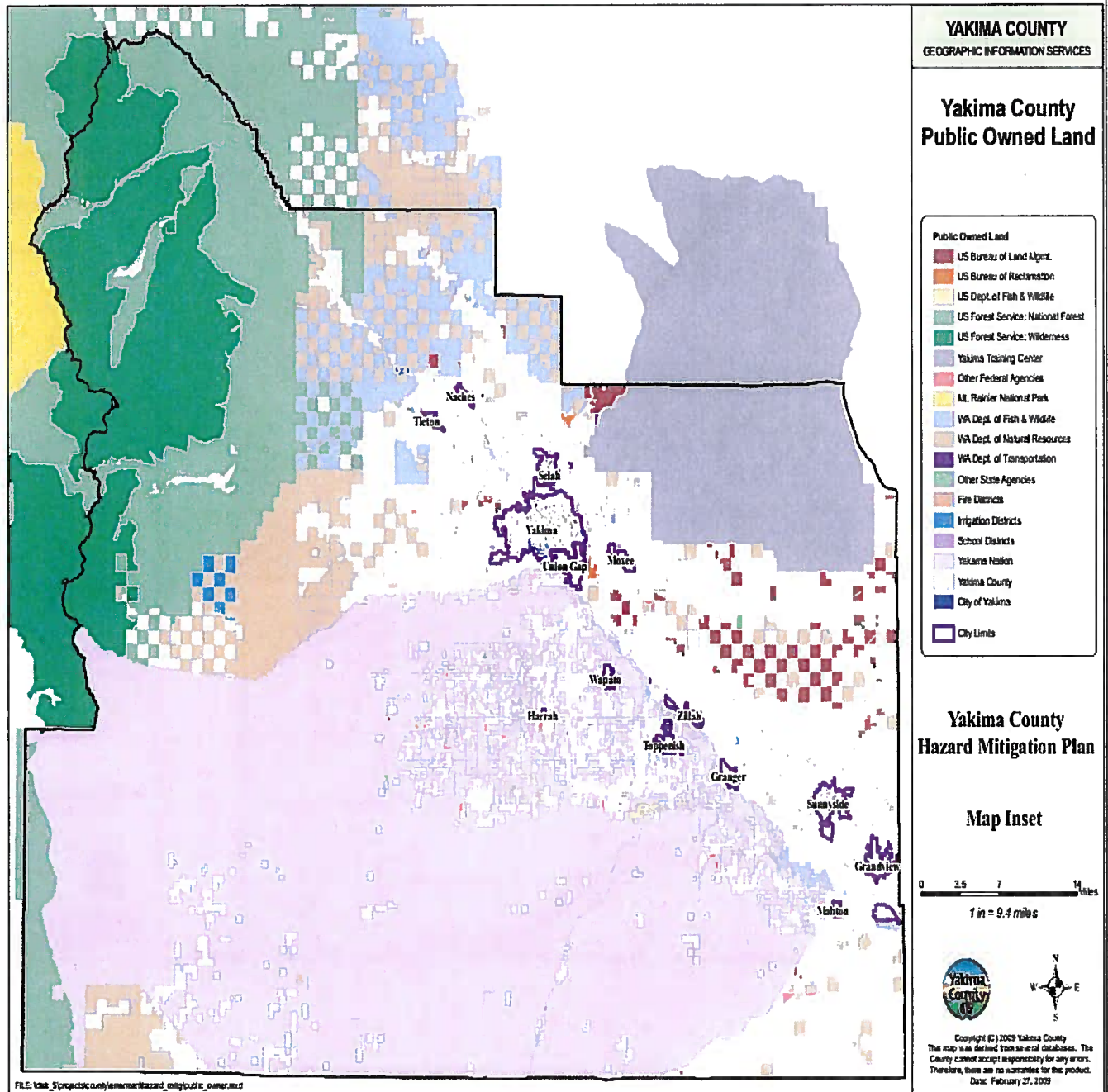
**Note:** The Measurement of Student Progress (MSP) and High School Proficiency Exams (HSPE) are a series of tests designed to assess and drive academic performance within the state's K-12 system. MSP exams are administered for grades 3-8, HSPE exams are for 9-12. Information Sources: Washington State Office of Superintendent of Public Instruction [www.k12.wa.us](http://www.k12.wa.us), Educational Service District 105 [www.esd105.org](http://www.esd105.org), and Yakima County School Districts

# City of Grandview Hazard Mitigation Plan 2015



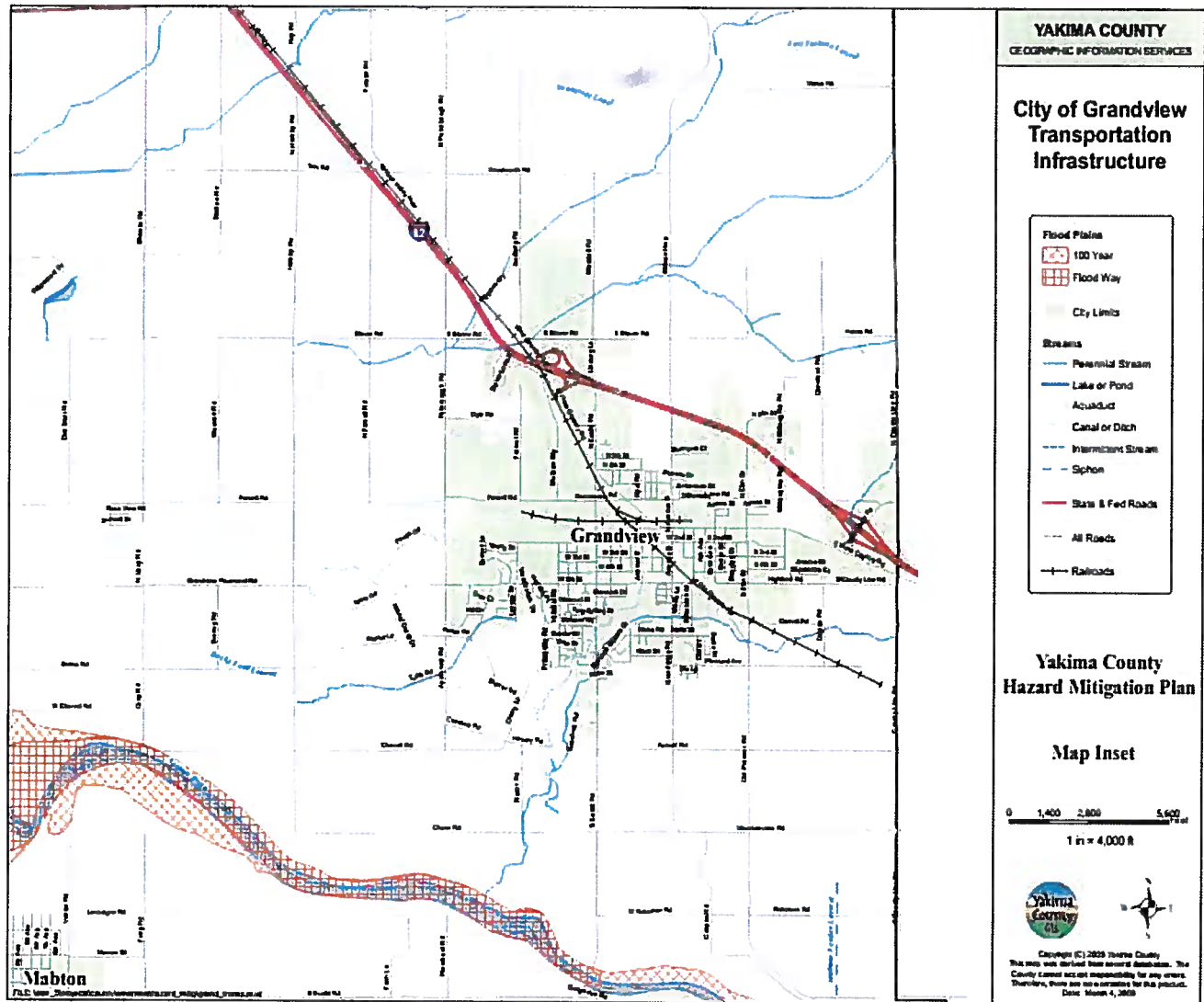
60

# City of Grandview Hazard Mitigation Plan 2015





## City of Grandview Hazard Mitigation Plan 2015



v2

Blank Intentionally

**3. Risk Assessment Profile**

- a. City of Grandview Risk Assessment (Tool and Chart))
- b. Hazard Maps
  - \* Yakima County Urban Wildlands
  - \* Geologic Hazards
  - \* Cascade Range Volcanoes



## City of Grandview Hazard Mitigation Plan 2015

### Risk Assessment Tool

The City of Grandview Risk Assessment tool is an Excel spreadsheet, which is designed to measure the city's risk from the effects of various hazards. The tool is based on a formula that weighs the probability and severity of potential impacts against preparations in place which are intended to minimize these impacts. Using a simple 1 to 5 scale, the probability of occurrence and the impact potential are tabulated along with mitigation efforts and the resources available to respond to the hazard. The score is based on a formula that weighs risk heavily but provides credit for mitigation and response and recovery resources. The higher the score, the higher the jurisdiction's risk from the hazard.

#### Scoring Guidelines.

There are eight risk assessment factors contained in the spreadsheet. All factor scoring is done on a scale of 1-5. The formula contained in the spreadsheet calculates higher scores in the occurrence and impact columns as increasing risks, while higher scores in the mitigation and resource categories lower the overall risk score giving credit for steps taken to reduce the likely impact. Based your scoring on a "worst-case scenario." The following guidelines will assist you in scoring each hazard.

#### Historical Occurrence (Frequency):

Based on the number of occurrences: At least one occurrence every **1-4 years = 5**; At least one occurrence every **5-10 years = 4**; At least one occurrence every **11-50 years = 3**; At least one occurrence every **51-100 years = 2**; Has not occurred, but for **planning purposes** should be evaluated = **1**.

#### Probability of Occurrence:

Based on the statistical probability of the hazard occurring in a given year. This may be obtained by scientific research or may simply be an educated guess. The higher the probability, the higher the score. Use the following guideline in determining you score. If less than **5% score 1**, if **5% to 10% score 2**, if **10% to 20% score 3**, if **20% to 40% score 4**, and **score 5 if greater than 40% probability**.

#### Human Impact:

Score based on greatest possible impact should worst-case event occur within the jurisdiction. Consider the likely number of fatalities, injuries, homeless, etc. Score **1 low - 5 highest**.

#### Property Impact:

Score based on the economic costs of the event, including both direct and indirect property damage from the hazard. Minor damage would be a 1 while a total loss should be a 5. Score **1 low - 5 highest**.

#### Business Impact:

Score based on factors such as service impact, lost wages, revenues, and taxes. Consider cost of relocation, permanent damage to valuable resources, etc. Score **1 low - 5 highest**.

#### Mitigation Activities:

Based on steps taken to mitigate the hazard such as structural and redundant technical systems. The more mitigation measures taken, the higher the score. Score **1 low - 5 highest**.

#### Internal Resources:

Base your score on the internal response and recovery resources. High scores should be given when there are a formal on-site response teams, or recovery teams. Score **1 low - 5 highest**.

#### External Resources:

Base your score on the external resources that would be immediately available. This would include the local

## City of Grandview Hazard Mitigation Plan 2015

jurisdictions. Give higher scores if there are specialized equipment and responders available or if contractor support such as specialized equipment, is immediately available. Score 1 low - 5 highest.

### Understanding the Scores

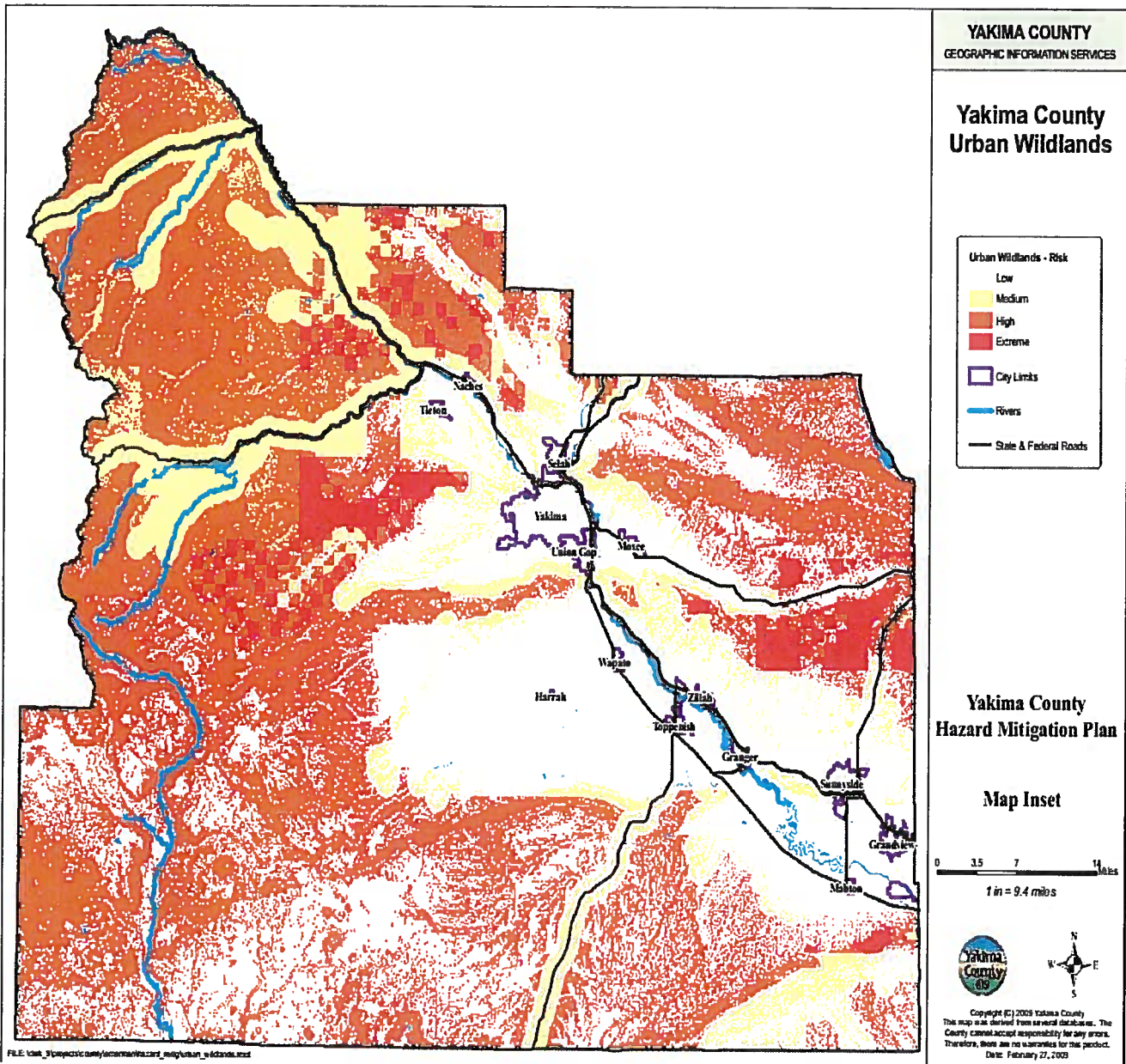
Based on the weighted scoring formula hazards that are relatively high will score 3.5 or higher. The spreadsheet is programmed to change colors based on the score as follows:

<b>Red</b>	<b>High Risk</b>	<b>Greater than 3.5</b>
<b>Yellow</b>	<b>Medium Risk</b>	<b>From 2.0 to 3.5</b>
<b>Green</b>	<b>Low Risk</b>	<b>Less than 2.0</b>

These scores are based on subjective judgments but, nonetheless, they provide a means to quickly rate the jurisdiction's risk from various hazards. Based on this risk scoring, priorities for increased mitigation and preparedness activities can be determined.

Risk Assessment									
Type of Hazard	Historical Occurrence	Probability of Occurrence	Human Impact	Property Impact	Business Impact	Mitigation Activities	Internal Resources	External Resources	Total
<b>Natural</b>									
Drought	1	1	1	1	1	1	1	1	1.0
Extreme Temps									1.7
Earthquakes	3	1	1	1	1	1	1	1	3.4
Lightning									1.7
Severe Wind	2	2	1	1	1	1	1	1	1.7
Severe Winter	4	4	2	1	2	1	1	1	3.4
Volcanic Eruption	1	1	2	2	2	1	4	5	3.4
<b>Technological</b>									
HM-Fixed	2	2	2	2	3	2	3	4	2.0
HM-Trans.									
<b>Analysis Results</b>									
High Risk: Greater than 3.5									
Medium Risk: 2.0 to 3.5									
Low Risk: Less than 2									

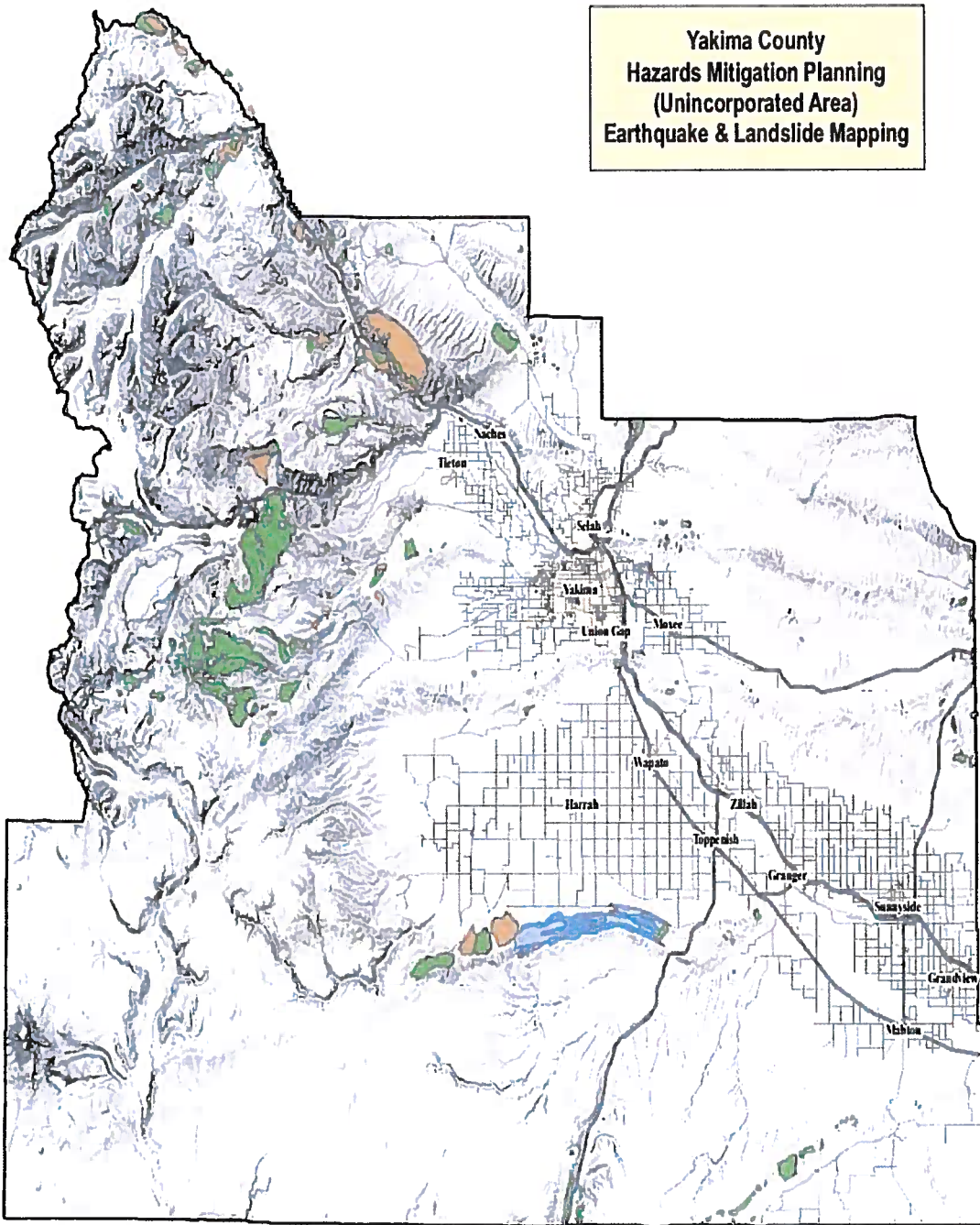
66



67



# City of Grandview Hazard Mitigation Plan 2015



FILE: \\ksh\_5\projects\county\hazard\hazard\_mitigation\_hazards.mxd

## Yakima County Hazards Mitigation Planning (Unincorporated Area) Earthquake & Landslide Mapping

**YAKIMA COUNTY**  
GEOGRAPHIC INFORMATION SERVICES

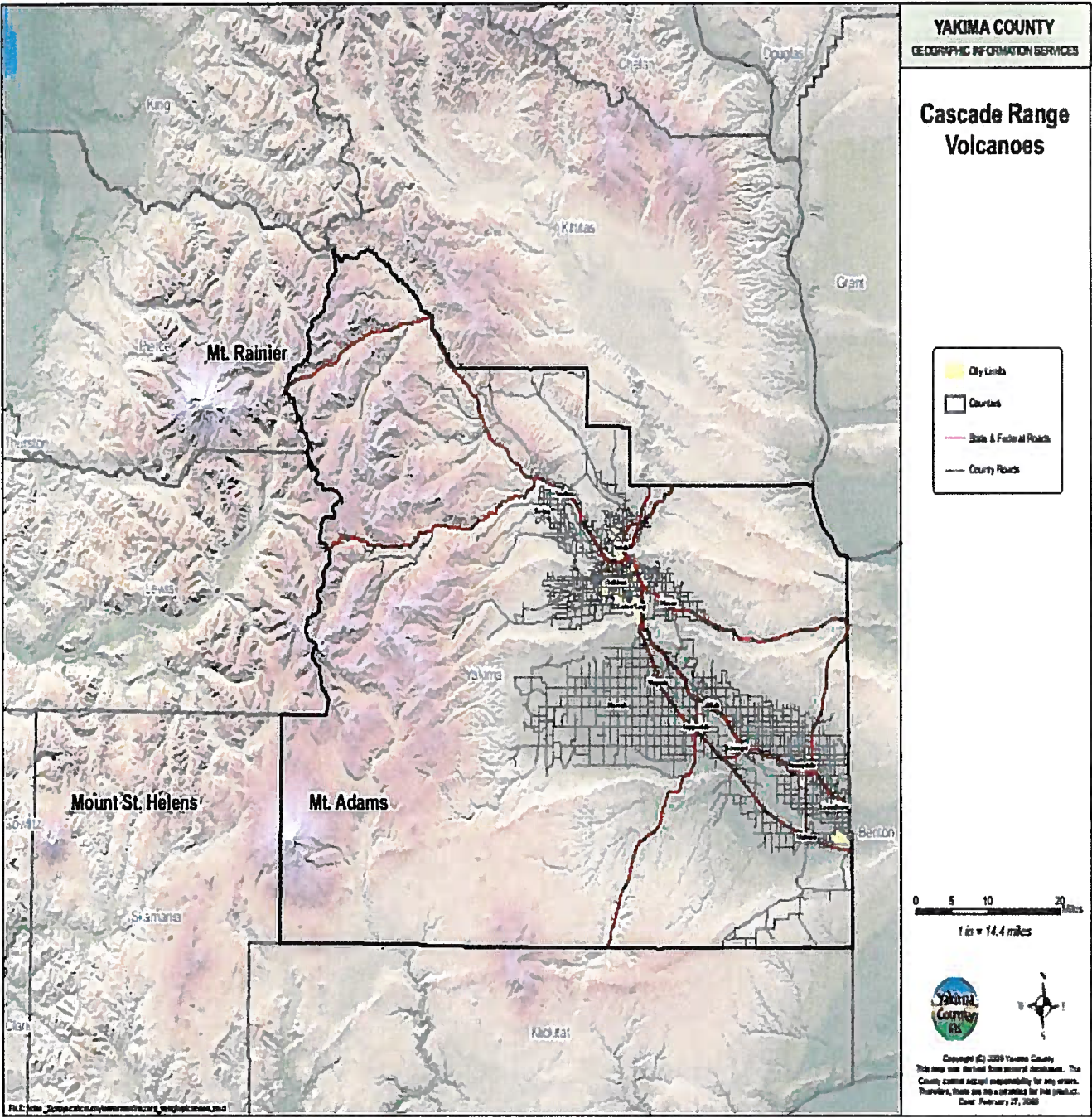
- Geologic Hazards**
- Earthquake Intermediate Risk
  - Earthquake High Risk
  - Landslide Intermediate Risk
  - Landslide High Risk
- City Limits**
- State & Federal Roads
- County Roads

0 3.5 7 14 Miles  
1 in = 9.4 miles



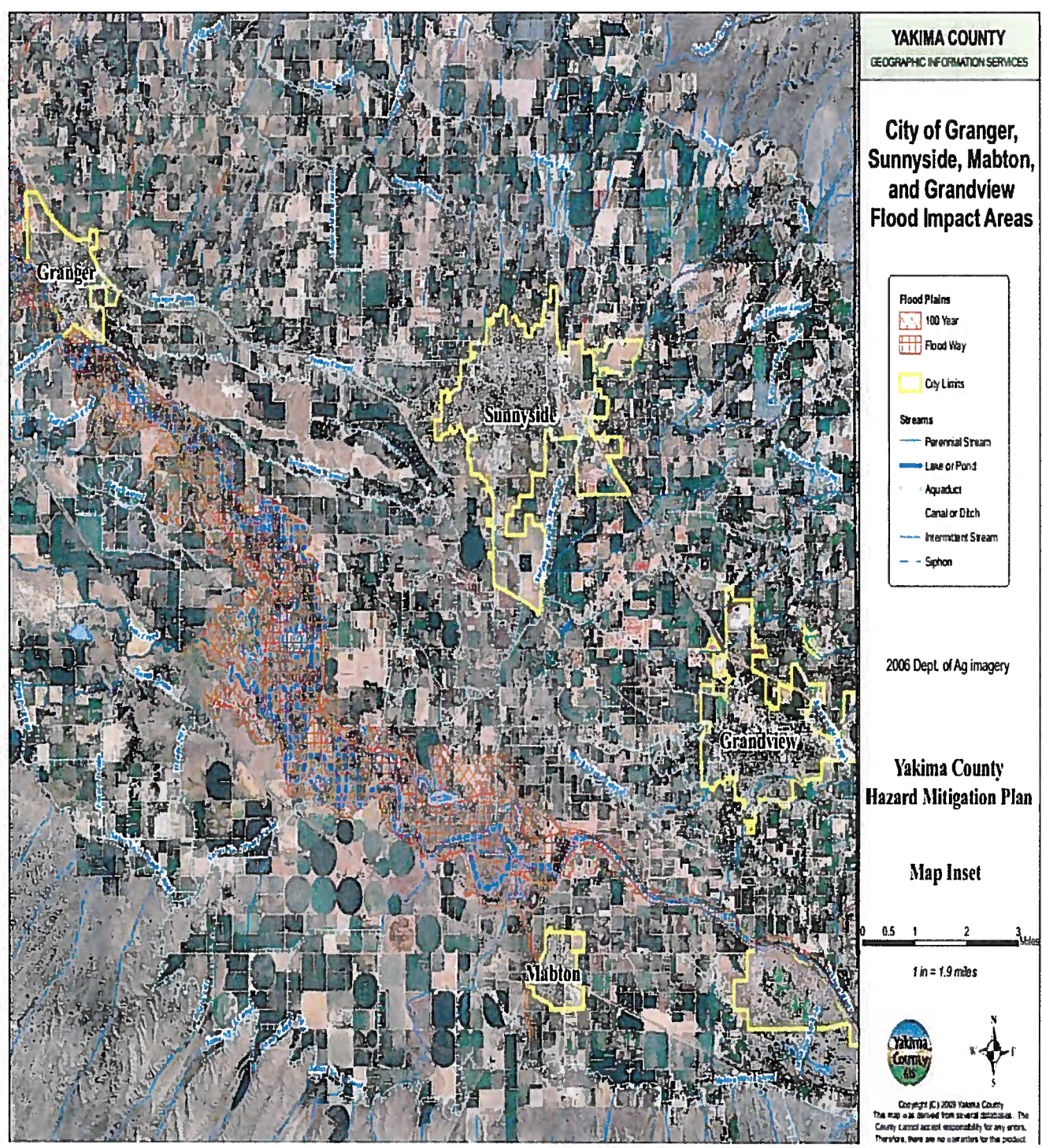
Copyright (C) 2009 Yakima County  
This map is derived from several databases. The County cannot accept responsibility for any errors. Therefore, there are no warranties for this product.  
Date: February 27, 2009

168





City of Grandview Hazard Mitigation Plan 2015



70



Blank Intentionally

71

4. National Flood Insurance Program

Level of NFIP Participation	Status
Does your community have a dedicated Floodplain Manager or NFIP Coordinator	The City Clerk administers the City floodplain management program according to FEMA and the National Flood Insurance Program.
Is the floodplain management an auxiliary duty?	Yes
Is there a Certified Floodplain Manager on staff?	No
Provide an explanation of NFIP administration services (e.g., permit review, GIS, education or outreach, inspections, engineering capability)	The Public Works Director administers and implements the Flood Damage Prevention Ordinance by granting or denying development permit applications in accordance with its provisions.
Continued Compliance Actions	Status
Identify need for additional staff	None noted at this time
Identify training needs of existing staff	None noted at this time
Are there potential ordinance changes to consider to strengthen requirements?	The City adopted Ordinance No. 2009-8 on September 21, 2009 adding a new Chapter 15.18 to the Grandview Municipal Code entitled "Flood Damage Prevention."
Are there potential improvements to permitting process or other administrative aspects of the community's NFIP program?	None at this time
Could your community enhance its floodplain services?	No, not at this time
Consider outreach and education to provide in the community?	No, not at this time
Outreach can be targeted to increase NFIP policies, promote NFIP services, or increase knowledge of local flood risk, among other topics.	No change needed at this time
Consider a variety of audiences, such as elected officials or builders.	In updating the City of Grandview regulations, numerous audiences were considered, including: home builder associations, general public, elected officials, and others.

5. 2010-2014 Action Items/Status/Summary

<p align="center"><b>City of Grandview 2010-2014 Action Items</b></p>	
<p><b>*Status:</b> Completed Deferred—Funding Availability; Not as Effective On-Going/Unchanged—Perpetual or Annual</p>	
<p align="center"><b>Flood (River/Stream)</b></p>	
<p>The City of Grandview will be adopting the 2009 International Building Codes by the mandated date of July 2010.</p> <p>*Status--Completed The City of Grandview building inspectors all have within their vehicles a packet to placard buildings after assessing damages for their structural stability.</p> <p>*Status—On-going/Unchanged City will continue be a part of the National Flood Insurance Program and regulate floodplain construction.</p> <p>*Status—On-going/Unchanged City of Grandview participates in the County Flood Control Zone District. Projects identified as FCZD include mitigation encompassing the city's impact area for floods.</p> <p>*Status—On-going/Unchanged</p>	
<p align="center"><b>Landslide</b></p>	
<p>Not applicable—the City of Grandview is not identified in Landslide impact area</p> <p>Grandview will review landslide-related information as disseminated by the Office of Emergency Management.</p> <p>*Status—On-going/Unchanged</p>	
<p align="center"><b>Wildland Fire</b></p>	
<p>City of Grandview is not in a high wildfire impact area.</p> <p>*Status—City will include wildfire into their 2015-2020 update Grandview will review wildland fire -related information as disseminated by the Office of Emergency Management</p> <p>*Status— On-going/Unchanged</p>	
<p align="center"><b>Severe Winter Storm</b></p>	
<p>The City of Grandview will be adopting the 2009 International Building Codes by the mandated date of July 2010.</p> <p>*Status--Completed The City of Grandview building inspectors all have within their vehicles a packet to placard buildings after assessing damages for their structural stability.</p> <p>*Status—On-going/Unchanged</p>	
<p align="center"><b>Wind Storm</b></p>	
<p>The City of Grandview will be adopting the 2009 International Building Codes by the mandated date of July 2010.</p> <p>*Status--Completed The City of Grandview building inspectors all have within their vehicles a packet to placard buildings after assessing damages for their structural stability.</p> <p>*Status—On-going/Unchanged</p>	
<p align="center"><b>Earthquake</b></p>	

## City of Grandview Hazard Mitigation Plan 2015

The City of Grandview will be adopting the 2009 International Building Codes by the mandated date of July 2010.

\*Status--Completed

The City of Grandview Building Inspectors all have within their vehicles a packet to placard buildings after assessing damages for their structural stability.

\*Status--On-going/Unchanged

### Volcano

Continue to develop plans to remove ash fall from critical infrastructures, i.e., waste water treatment, major arterials, water supply; etc.

\*Status-- On-going/Unchanged

Improve emergency service support through alert and warning, emergency operations center, and other direction and control facilities

\*Status-- On-going/Unchanged

Improve emergency public information on clean-up and removal of ashfall

\*Status-- On-going/Unchanged

### Hazardous Materials—Fixed and Transportation

2009 International Fire Code dictates issues dealing with chemical regulations established by state and federal programs, i.e., Ecology, EPA, OSHA, etc.

\*Status--Completed

Grandview Fire Department continues to update response equipment and training.

\*Status-- On-going/Unchanged

Grandview Fire Department continues to conduct hazard assessments on chemical facilities.

\*Status-- On-going/Unchanged

Grandview Fire Department continues to use risk mapping and technologies

\*Status-- On-going/Unchanged

Grandview Fire Department continues to participate in the county LEPC.

\*Status-- On-going/Unchanged



## 6. Hazard-Specific Action Items

### Development of Hazard-Specific Mitigation Actions

Generally, a catastrophic incident will demand extraordinary actions from state agencies and local jurisdictions - actions for which we are not currently well prepared. Grandview is vulnerable to technological and natural hazards with the potential to cause significant casualties and infrastructure damage. Disasters labeled 'major' are not uncommon and the Yakima County Comprehensive Emergency Management Program (CEMP) addresses the response requirements of floods, earthquakes, hazardous materials and wildfires. These incidents cause injuries, loss of life and damage in a relatively limited area. Current procedures provide response and recovery for these incidents including terrorist incidents. In contrast a catastrophic incident impacts a large area or across many societal sectors. Mitigation efforts reduce impacts and current mitigation efforts are focused on many of the catastrophic scenarios in Grandview; however a catastrophic incident is one that overwhelms. The nature and extent of damage; number, location and severity of personal injuries; type, availability and condition of surviving resources and the damages to critical infrastructure all are likely to be in the extreme range. Warning may or may not be available.

Critical/Essential Service Impacts--Disruptions	Critical Facility Name/Location
1. Streets/roads debris, power lines, water	Interstate I-82 US Route 12 Waste Water Treatment Plant-850 Ridgeview Rd Water Tower- King Street and Velma Street
2. Utilities power lines, water mains	Pacific Power Co.-in town Benton REA-city limits/ rural areas
3. Health/medical health/medical care facilities	MT. View Women's Health-207 West Second St Grandview Medical Center-Euclid St. Birch St. Medical Center- Birch St. Valley Chiropractic- Euclid St. Farm Workers Clinic- Wallace Way
4. Emergency response fire, police, ambulance	Fire Dep.- 110 Avenue A. Police Dep.- 207 West Second St.
5. Communications landlines, cell phones, radio linkages	KARY-FM radio (100.9 FM) K08LU TV(Channel 8 FCC Registered Cell Phone Towers-1 FCC Registered Private Land Mobile Towers- 5 FCC Registered Microwave Towers- 7
6. Continuity of government day-to-day business	City Hall- 207 W. 2nd St Bleyhl Community Library-311 Division Street Grandview Middle School- 401 W 2nd Street Grandview High School- 913 W 2nd St Arthur H. Smith Elementary- 205 Fir Street Harriet Thompson Elementary- 1105 2nd Street McClure Elementary School- 811 W 2nd Street Yakima Valley Community College Campus- 500 .w St.

75

**City of Grandview Hazard Mitigation Plan 2015**

7. Private-sector business normal business activities	JM Smuckers Company, Kenyon Zero Storage, R.E. Powell Distributing, Shonan, USA, Wal-Mart Distribution, Welch Foods,

Grandview is subject to the following hazards and their impacts.  
(Keyed to Table)

Hazard Impact on Critical/Essential Service							
Impacts	1	2	3	4	5	6	7
<b>Natural Hazards</b>							
Drought	X		X	X			
Extreme Temperatures	X		X				
Earthquakes (6.5 or greater)	X	X	X	X	X	X	X
Lightning	X						
Severe Wind Storms	X	X		X			
Severe Winter Storms	X	X		X			
Volcanic Eruption	X		X	X	X		
<b>Technological Hazards</b>							
HM Accident, Fixed Facility			X	X			
HM Accident, Transportation	X		X	X			X

76

Blank Intentionally.

11

City of Grandview  
Hazard-Specific Action Items  
2015-2020

**Priority:**  
**H** (High); **M**  
(Medium); **L** (Low)

**Timeline:**  
**S**hort-Range (less than 2 years); **M**id-Range (2-5 years); **L**ong-Range  
(more than 5 years); **O**ngoing

**Funding Source:**  
Local; State; FEMA;  
Private; Other

**Estimated  
Cost:**  
Actual;  
Estimated

\*Lead responsibility is the agency, entity, division, etc. that has a primary role in coordinating a hazard action item response.

\*\*The City's priority; timeline; funding source and estimated costs for addressing the potential hazards is highly opportunistic and depends on available revenues from outside sources.

**General: All hazards Public Awareness**

Action Items	*Lead Responsibility	**Priority	**Timeline	**Funding	**Estimated Cost
Emergency preparedness education programs for schools	Public Works	H	Ongoing	Local (in-kind)	
Public service announcements	City Hall	H	Ongoing	Local (in-kind)	
Preparedness handbooks, brochures. Distribution of severe weather guides, homeowners' retrofit guide, etc.	City Hall	H	Ongoing	Local (in-kind)	

**Drought**

Action Items	*Lead Responsibility	**Priority	**Timeline	**Funding	**Estimated Cost
Monitor Drought Conditions	Public Works	H	Ongoing	Local (in-kind)	



**City of Grandview Hazard Mitigation Plan 2015**

**City of Grandview  
Hazard-Specific Action Items  
2015-2020**

**Priority:**  
**H** (High); **M**  
(Medium); **L** (Low)

**Timeline:**  
Short-Range (less than 2 years); **M**id-Range (2-5 years); Long-Range  
(more than 5 years); **O**ngoing

**Funding Source:**  
Local; State; FEMA;  
Private; Other

**Estimated  
Cost:**  
Actual;  
Estimated

Monitor Water Supply	Public Works	M	Ongoing	Local (in-kind)	
Plan for Drought	Public Works	H	Ongoing	Local (in-kind)	
Require Water conservation During Drought Conditions	Public Works/Council	H	Ongoing	Local (in-kind)	
Educate Residents on Water Saving Techniques	Public Works	M	Ongoing	Local (in-kind)	

**Earthquake**

Action Items	*Lead Responsibility	**Priority	**Timeline	**Funding	**Estimated Cost
Adopt and Enforce Building Codes	Public Works/Council	H	Ongoing	Local (in-kind)	
Conduct Inspections for Building Safety	Public Works	M	Ongoing	Local (in-kind)	
Protect Critical Facilities and Infrastructure	Public Works	M	Ongoing	Local (in-kind)	

**Extreme Temperatures**

Action Items	*Lead Responsibility	**Priority	**Timeline	**Funding	**Estimated Cost
Increase Awareness of Extreme Temperature Risk and Safety	Public Works	M	Mid-Range	Local (in-kind)	
Assist Vulnerable Populations	Police and Fire Department	M	Ongoing	Local (in-kind)	
Educate Property Owners About Freezing Pipes	Public Works	M	Mid-Range	Local; State; FEMA	

**Hazardous Materials**

Action Items	*Lead Responsibility	**Priority	**Timeline	**Funding	**Estimated Cost
Grandview Fire Department continues to update response equipment and training.	Fire Department	H	Ongoing	Local (in-kind)	
Grandview Fire Department continues to conduct hazard assessments on chemical facilities.	Fire Department	H	Ongoing	Local (in-kind)	
Grandview Fire Department continues to use risk mapping and technologies.	Fire Department	H	Ongoing	Local (in-kind)	

**Lightning**

Action Items	*Lead	**Priority	**Timeline	**Funding	**Estimated
--------------	-------	------------	------------	-----------	-------------

# City of Grandview Hazard Mitigation Plan 2015

## City of Grandview Hazard-Specific Action Items 2015-2020

**Priority:**  
H (High); M  
(Medium); L (Low)

**Timeline:**  
Short-Range (less than 2 years); Mid-Range (2-5 years); Long-Range  
(more than 5 years); Ongoing

**Funding Source:**  
Local; State; FEMA;  
Private; Other

**Estimated  
Cost:**  
Actual;  
Estimated

	Responsibility				Cost
Protect Critical Facilities and Equipment	Public Works	H	Ongoing	Local; State; FEMA	
<b>Severe Wind</b>					
Action Items	*Lead Responsibility	**Priority	**Timeline	**Funding	**Estimated Cost
Adopt and Enforce Building Codes	Public Works/Council	H	Ongoing	Local (in-kind)	Funded
Promote or Require Site and Building Design Standards to Minimize Wind Damage	Public Works/Council	H	Ongoing	Local (in-kind)	Funded
Protect Power Lines and Infrastructure	PP & L	H	Ongoing	Private	
Retrofit Public Buildings and Critical Facilities	Public Works	L	Short	Local; State	
<b>Severe Winter Storms/Freezes</b>					
Action Items	*Lead Responsibility	**Priority	**Timeline	**Funding	**Estimated Cost
Adopt and Enforce Building Codes	Public Works/Council	H	Ongoing	Local (in-kind)	
Protect Power Lines	PP & L	H	Ongoing	Local (in-kind)	
Reduce Impacts to Roadways	Public Works	H	Ongoing	Local (in-kind)	
Conduct Winter Weather Risk Awareness Activities	Public Works	H	Ongoing	Local (in-kind)	
Assist Vulnerable Populations	Police and Fire Department	H	Ongoing	Local (in-kind)	
<b>Volcanic Eruption</b>					
Action Items	*Lead Responsibility	**Priority	**Timeline	**Funding	**Estimated Cost
Continue to develop plans to remove ash fall from critical infrastructures, i.e., waste water treatment, major arterials, water supply; etc.	Public Works	L	Ongoing	Local (in-kind)	
Improve emergency service support through alert and warning, emergency operations center, and other direction and control facilities	Police and Fire Department	L	Ongoing	Local (in-kind)	
Improve emergency public information capabilities	Police and Fire Department	L	Ongoing	Local (in-kind)	
<b>Multiple Hazards</b>					
Action Items	*Lead	**Priority	**Timeline	**Funding	**Estimated

# City of Grandview Hazard Mitigation Plan 2015

## City of Grandview Hazard-Specific Action Items 2015-2020

**Priority:**  
**H** (High); **M**  
(Medium); **L** (Low)

**Timeline:**  
**S**hort-Range (less than 2 years); **M**id-Range (2-5 years); **L**ong-Range  
(more than 5 years); **O**ngoing

**Funding Source:**  
Local; State; FEMA;  
Private; Other

**Estimated  
Cost:**  
Actual;  
Estimated

	Responsibility				Cost
Assess Community Risk	Fire Department	H	Ongoing	Local (in-kind)	
Increase Hazard Education and Risk Awareness	Fire Department	H	Ongoing	Local (in-kind)	
Improve Household Disaster Preparedness	Fire Department	H	Ongoing	Local (in-kind)	

**City of Grandview Hazard Mitigation Plan 2015**

Blank Intentionally.

**b. 2015-2020 Hazard-Specific Action Items Annual Review and Progress  
Mitigation Action Progress Report Form**

<b>Progress Report Period</b>	<b>From Date:</b>	<b>To Date:</b>
<b>Action Item</b>		
<b>Responsible Agency</b>		
<b>Contact Name</b>		
<b>Contact Phone/Email</b>		



<b>Action Status</b>	<input type="radio"/> Action completed <input type="radio"/> Action canceled <input type="radio"/> Action on schedule Anticipated completion date: _____ <input type="radio"/> Action delayed Explain: _____
----------------------	---

**Summary of Action Progress for this Report Period**

1. What was accomplished for this Action during this reporting period?

\_\_\_\_\_

2. What obstacles, problem, or delays did the Action encounter?

\_\_\_\_\_

3. If uncompleted, is the Action still relevant? Should the Action be changed or revised?

\_\_\_\_\_

4. Other comments

\_\_\_\_\_

Blank Intentionally.

84